

THE THEORY OF LOVE, SECTION A, SPRING 2007

COURSE TIMES: April 13–29, 2007 — Fri Sat 8 and 10 pm, Sun 8 pm

COURSE LOCATIONS: Reed College — Pacific Northwest College of Art — Chapman Elementary School

Mr. David Abel – bass, librettist

Ms. Leo Chapeau – contralto, Love & Levity practitioner

Mr. Leo Daedalus – tenor, media/art director*, linguist

Ms. Anna Daedalus – soprano, art/media director*

Jenny Fern Anderson – vestiarist

John Berendzen – baritone, composer/director

Joel Holly – lectern construction

Tomek Karwowski – still photographer*

Samuel Miller – film specialist*

Kate Sanderson – video cameraperson, documentation*

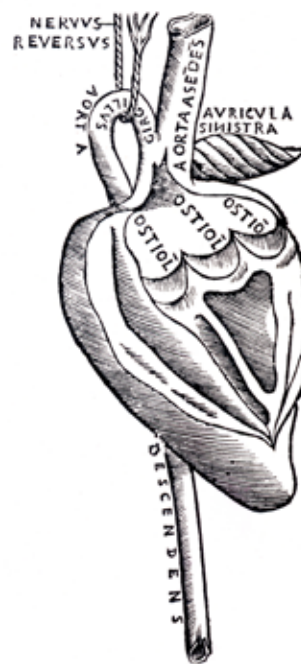
Christoph Saxe – video technician

*Metaplastic – media and publicity research & design partner

Jennifer Olson – administration and development

Alex Reagan – public relations, house management

Maesie Speer – assistant director



liminal@liminalgrouop.org ◆◆◆ www.liminalgroup.org

Now celebrating its 10th anniversary, Liminal has produced more than 12 original projects, winning numerous Portland Critics' Circle (Drammy) awards for its productions of *The Seven Deadly Sins*, *Three Plays Five Lives*, *The Resurrectory*, and others.

The Theory of Love is funded with support from RACC, The Kinsman Foundation, and you our beloved friends. Sponsored by Willamette Week, Reed College Theatre Department, the Pacific Northwest College of Art, and Metaplastic.

Metaplastic is a Portland collaborative art/culture/media production, research and design entity, online at metaplastic.com.

Donors

Chris Miller, William and Sally Reagan, Alex Reagan, Georgia and Moses Gunesch, Frances Storrs, Frank Marroquin, Caroline Boekelheide, Joan and John Shipley, Anthony Alvarez, Courtney and Leather Storrs, Leslie Goodwin, Jane Burtis, L. Brooks Hill, Linda Miles, Jennifer Olson, Charlotte Wells, Michael Stirling, Brian Jennings, Linda Austin, Tiffany Yelton, BJ Seymour, Ann Halprin

Heartfelt Thanks

Pandit Pran Nath, Michael Stirling, Kathleen Worley, Michael Hall, Marty Gallagher, Jim Blashfield, Tim DuRoche, Gavin Shettler, Chris Piuma, Derek Eklund, Ned Perry, Keith Karoly, Kristine Gunter, William and Sean at Portland Nursery, Bryan Markovitz, Amanda Boekelheide, Fever and Hand2Mouth, Samar Itani, Trader Joe's NW, Jonathan Sielaff, Asia and Ellie at Tao of Tea, mARK oWens, Yvonne de Maat, Lindsay and Nita Hill, James Moore, Jeff Marchant, Tiffany Yelton, Julia O'Donnell



THE THEORY OF LOVE, SECTION A, SPRING 2007

Sources

The libretto for *The Theory of Love* was selected, edited, and arranged by David Abel, incorporating quotations and paraphrases from Robert Sternberg; Enzo Emanuele, et al.; Adam Phillips; John Cheever; Martin Jacobson; Jessica Roberts; Bijal Trivedi; Jan Herman; Emmett Williams; Sappho (trans. Ed Sanders); Catullus (trans. Jim Powell); Hillary Mayell; Harry Harlow; Simone DeBeauvoir; Mark Booth; W.J. Henderson; John Bartlett; William Carlos Williams; Hollis Frampton; Anthony Walsh; Klaus Theweleit (trans. Malcolm Green); Antonia Fraser; Marina Tsvetaeva (trans. Angela Livingston); Robert Duncan; John Brackenbury; Matelda Viola (trans. Candace Smith); Giovanni di Prato (qtd. L. Ellinwood); Julian Jaynes; Martin Best; Vidya and Kalidasa (trans. Andrew Schelling); Hélène Cixous (trans. Betsy Wing); Roland Barthes (trans. Richard Howard); www.matchyourself.com; www.answers.com; www.historytoday.com

Anna and Leo Daedalus read selections in English, French, Spanish, Italian, Portuguese and Finnish from Rosario Castellanos; Roland Barthes; Anne Carson; Antonio Tabucchi; Andrew Schelling; Nando Cordel & Amelinha; Elias Lönnrot

The video incorporates quotations from Ovid (trans. Allen Mandelbaum); Ghalib (trans. Sasha Newborn); Andreas Capelanus; Matsuo Bashō; Pablo Neruda; Anne Carson; José Saramago; Italo Calvino; Zbigniew Herbert; Alan Watts; James Joyce; John Keats; musical notation from chansons by Bernart de Ventadour

Images of art in the video are by William-Adolphe Bouguereau; Jean Auguste Dominique Ingres; anonymous: mural of Venus at Pompeii; Alessandro Allori; Caravaggio; Giovanni Battista Moroni; Charles Nanteuil

For a more detailed bibliography, see www.liminalgroup.org



Figure 11 Larynx, thyroid and arytenoid cartilages and position of the vocal cords

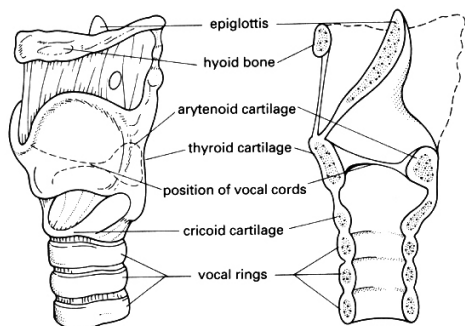


Figure 12 Laryngeal musculature (a)

